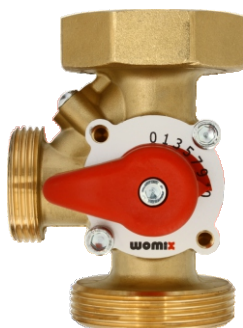
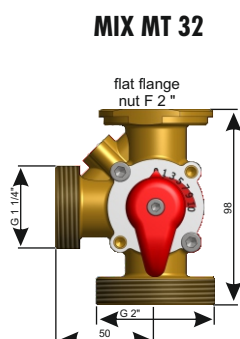
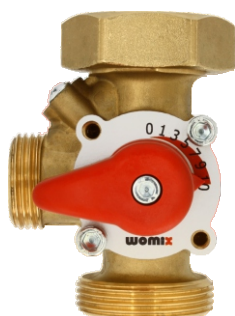
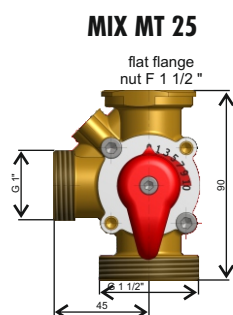


Mixing valve MIX MT 25, 32 for units SMT DN 25, 32

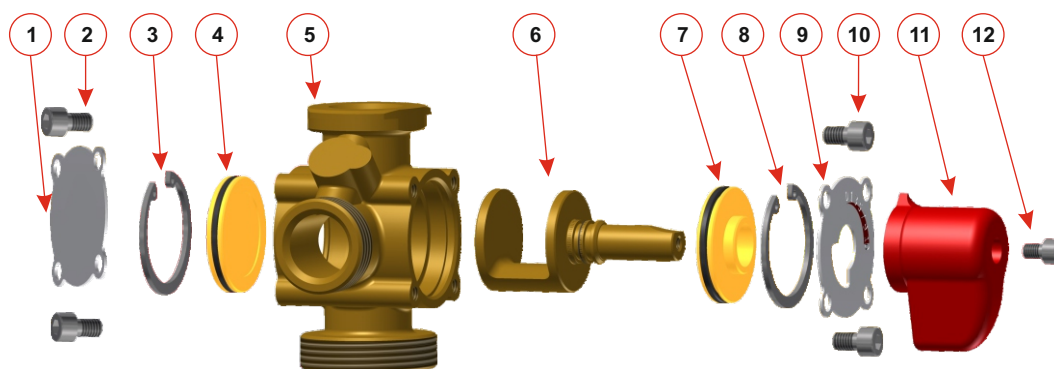


3-way mixing valve **MIX MT 25, 32** for straight-through flow, applies to small and medium-sized central heating system. It can be adjusted manually or automatically by the actuator **MP 10**.

Technical data:

Dimensions:	from 1½" to 2"
Seal:	two O-rings EPDM
Body, rotor and cap:	brass CW617N
Angle of rotation:	90°
Max pressure:	10 bar
Max temp.:	110° C
Handle:	red plastic
Scale:	steel

Type	Kvs	Catalog number
Mixing valve MIX MT 25 - DN 25 with brass nut 1 1/2"	8,3	001021
Mixing valve MIX MT 32 - DN 32 with brass nut 2"	17	001022

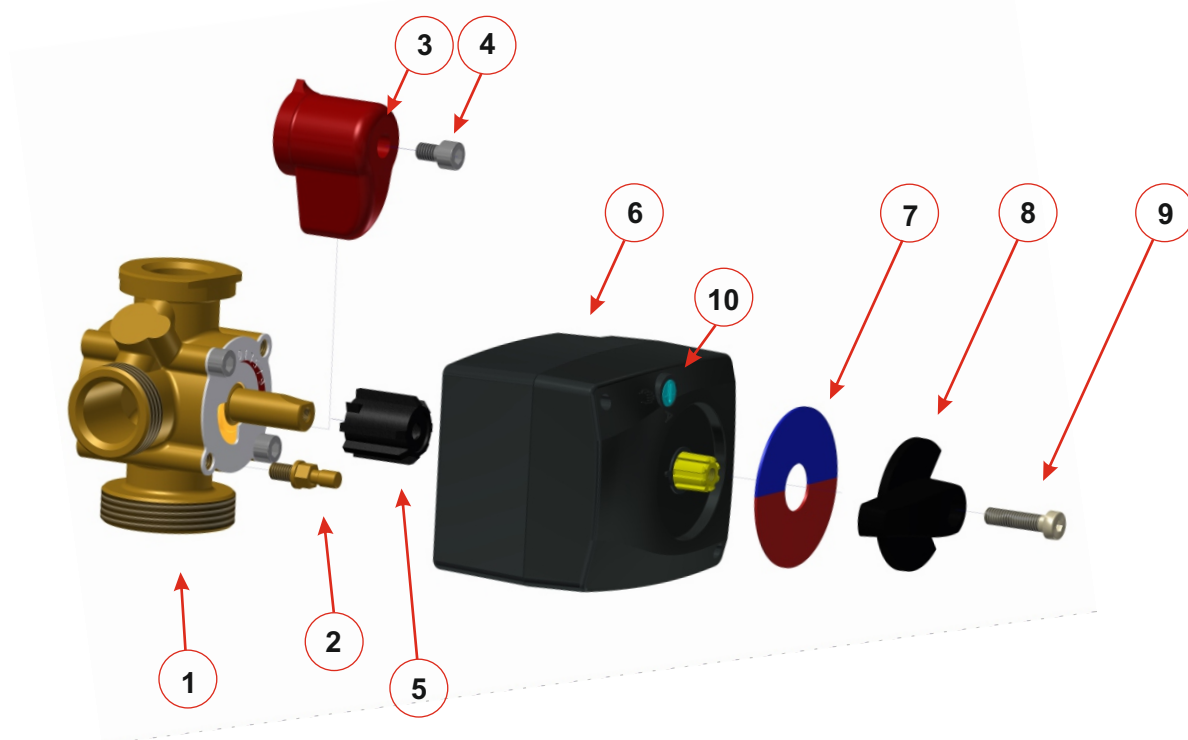


To change the supply side from right to left in the mixing valve, we must:

1. Unscrew the handle (11) with the M5 screw (12), unscrew the scale (9) with the M6 screws (10), unscrew the plate (1) with the M6 screws (2).
2. Using pliers, remove the Seger ring (3), push out the valve plug (4).
3. Using pliers, remove the Seger ring (8), push out the valve sealing cover (7).
4. Remove the plug (6) and insert it backwards into the mixer body (5).
5. Put the valve covers (4) and (7) back on and block with the Seger rings.
6. Tighten the scale (9) and the plate (1), tighten the handle.

ATTENTION! The above activities should be carried out carefully so as not to damage the seals of the mixing valve.





1. Set the mixing valve to the closed (0 on the scale) or open (10 on the scale) position scale).
2. Remove the handle [3] from the mixing valve [1] by removing the screw [4].
3. Screw in the brass screw preventing the actuator from rotating around its axis [2] into the body of the mixing valve [1].
4. Place the adapter [5] on the valve plug.
5. Put the actuator [6] on the adapter [5] so that the screw [2] hits the channel cutout on the bottom of the actuator.
6. Put the scale [7] on the actuator [6]. The method determines the correct position of the scale installation of the valve in the system. Where the movement of the mushroom to the right closes The scale valve should be turned 180 degrees so that the blue part is on the right pages.
7. Put on the handle [8].
8. Fix the whole with the screw [9].

The switch manual / automatic [10] allows us to check the correct installation of the actuator.

